

## Table Of Contents

Contents .....	Page
Main features .....	2
Nomenclature .....	3
Floor Fan Coil .....	5
Ceiling Fan Coil.....	9
Decorative Fan Coil .....	15
Ducted Fan Coil .....	17
Fan Coil Selection Table .....	19

**Head Office:** Sabalan Gostar Tahviah Bldg., #92., Mollasadra St.,  
Vanak Sq., Tehran-Iran

Phone: (+98 21) 88030691-2 , Fax :(+9821) 88034440

**Factory:** Sabalan Factory, #23, Enghelab St., Parsa Sq.,  
Aboul Ghassem Blvd., Ahmadabad Mostofi, Tehran, Iran  
Phone: (+98 228) 2275810-15 , Fax: (+98 228) 2275819

---

[www.sabalanhvac.com](http://www.sabalanhvac.com)  
[info@sabalanhvac.com](mailto:info@sabalanhvac.com)

■ Note: This specification may be changed without notice due to design improvements.

### Main Features:

Variable models of **SABALAN GOSTAR TAHVIEH** Fan Coils create a pleasant condition with optimal temperature, humidity and air handling. There are excellent air conditioning systems designed for a wide range of climatic conditions and due to their special design you would save a great deal of savings such as energy, space and expenses. Therefore a comfortable living and working condition is guaranteed by **SABALAN** Fan Coils. **SABALAN GOSTAR TAHVIEH** permanently tries to satisfy the increasing number of customers' tastes through research & development centers' efforts by supplying a wide range of models with high efficiency, simple operation, low noise operation, flexibility, super high efficient fin and compact design.

### Variety of Models

They are available at: 1. Exposed & Concealed Floor Fan Coils 2. Exposed & Concealed Ceiling Fan Coils 3. Decorative Ceiling & Floor Fan Coils 4. Ducted Fan Coils.

### Simple Operation

**SABALAN** Fan Coil Units are easy to install & use, therefore it has made Fan Coils handy in check & maintenance.

### Flexibility

**SABALAN** Fan Coil Units are flexible to adjust various power saving methods.

### Low Noise Operation

Hi-Tech ventilators maintain this feature with balanced fan blades.

### Super High Efficient Fin

Fan Coils' heat exchangers are manufactured by owned unique expanding processes and super high efficient herringbone wavy fins.

### Compact Design

Required installation space is minimized by using compact designs, including high mechanism & Hi Tech instruments in production processes.

## Nomenclature

Fan Coil	Model	Shaded	Air Flow(CFM)	Charge type	Discharge type
Floor	→ F				
Ceiling	→ C				
Floor Decorative	→ FD				
Ceiling Decorative	→ CD				
Exposed	→ E				
Concealed	→ C				
Mini Cabinet	→ M				
200 CFM	→ 200				
300 CFM	→ 300				
1000 CFM	→ 1000				
2000 CFM	→ 2000				
Under	→ U				
Back	→ B				
Top	→ T				
Front	→ F				

## Nomenclature

### Ducted Fan Coil

### Shaded

### Air Flow

### Charge type

Concealed → C

Exposed → E

800 CFM → 8

1200 CFM → 12

2000 CFM → 20

Under → U

Back → B

**Floor Fan Coil**  
**Exposed**  
**Discharge type: Front**

Section	Models	FE-200F	FE-300F	FE-400F	FE-600F	FE-800F	FE-1000F	FE-1200F
Cooling Capacity (BTU/hr)		5549	12968	18998	28335	35973	45091	54301
Flow Rate Cooling (GPM)		1.1	2.58	3.8	5.6	7.15	9	11
Cooling Pressure Drop (Ft Water)		0.51	2.98	6.92	16.5	13.75	23	35.5
Heating Capacity (BTU/hr)		16637	25388	34166	49715	64402	79487	94516
Flow Rate heating (GPM)		1.66	2.53	3.5	5	6.4	8	9.5
Heating Pressure Drop (Ft Water)		0.91	2.4	4.9	11.3	9.7	15.6	23
Type	Forward Curved - Shaft Drive							
Quantity		1	1	2	2	3	4	4
Air Flow (CFM)		200	300	400	600	800	1000	1200
Motor Power (HP)		1/30	1/25	1/25	1/20	1/30+1/25	1/25+1/25	1/15+1/15
Current Draw (A)		0.31	0.37	0.37	0.37	0.31+0.37	0.37+0.37	0.37+0.37
In & Out Pipe Size (inch)	3/4							
Tube Outer Dimension (inch)	3/8							
Fin Specification	12 FPI, 3 Rows							
Face Areas (ft <sup>2</sup> )		0.789	1.156	1.522	1.889	2.253	2.619	2.985
Drain Pipe Size (inch)	5/8							
Air Filter	Aluminum Filter - Washable							
Weight (kg)		25	28	33	40	48	55	62
Control Unit	3 Steps Control Unit							

**Capacity Condition:**

Sea Level

Heating: Inlet Water: 160°F

Outlet Water: 140°F

DB: 60°F

Cooling: Inlet Water: 45°F

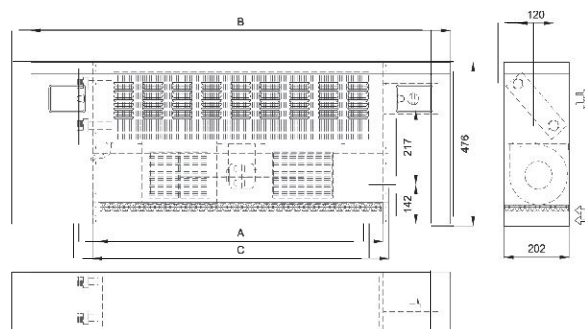
Outlet Water: 55°F

DB: 80°F

WB: 67°F

All motors are IP 20

MODELS	A	B	C
FE-200F	510	855	540
FE-300F	680	1025	710
FE-400F	850	1195	880
FE-600F	1020	1365	1050
FE-800F	1190	1535	1220
FE-1000F	1360	1705	1390
FE-1200F	1530	1875	1560



**Floor Fan Coil**  
Exposed  
Discharge type: Top

Section	Models	FE-200T	FE-300T	FE-400T	FE-600T	FE-800T	FE-1000T	FE-1200T
Cooling Capacity (BTU/hr)		5549	12968	18998	28335	35973	45091	54301
Flow Rate Cooling (GPM)		1.1	2.58	3.8	5.6	7.15	9	11
Cooling Pressure Drop (Ft Water)		0.51	2.98	6.92	16.5	13.75	23	35.5
Heating Capacity (BTU/hr)		16637	25388	34166	49715	64402	79487	94516
Flow Rate heating (GPM)		1.66	2.53	3.5	5	6.4	8	9.5
Heating Pressure Drop (Ft Water)		0.91	2.4	4.9	11.3	9.7	15.6	23
Type	Forward Curved - Shaft Drive							
Quantity		1	1	2	2	3	4	4
Air Flow (CFM)		200	300	400	600	800	1000	1200
Motor Power (HP)		1/30	1/25	1/25	1/20	1/30+1/25	1/25+1/25	1/15+1/15
Current Draw (A)		0.31	0.37	0.37	0.37	0.31+0.37	0.37+0.37	0.37+0.37
In & Out Pipe Size (inch)	3/4							
Tube Outer Dimension (inch)	3/8							
Fin Specification	12 FPI, 3 Rows							
Face Areas (ft <sup>2</sup> )		0.789	1.156	1.522	1.889	2.253	2.619	2.985
Drain Pipe Size (inch)	5/8							
Air Filter	Aluminum Filter - Washable							
Weight (kg)		25	28	33	40	48	55	62
Control Unit	3 Steps Control Unit							

**Capacity Condition:**

Sea Level

Heating: Inlet Water: 160°F

Outlet Water: 140°F

DB: 60°F

Cooling: Inlet Water: 45°F

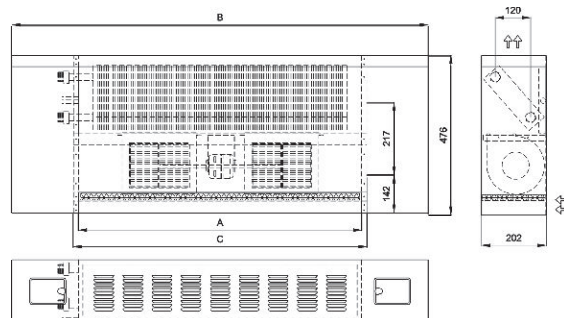
Outlet Water: 55°F

DB: 80°F

WB: 67°F

All motors are IP 20

MODELS	A	B	C
FE-200T	510	855	540
FE-300T	680	1025	710
FE-400T	850	1195	880
FE-600T	1020	1365	1050
FE-800T	1190	1535	1220
FE-1000T	1360	1705	1390
FE-1200T	1530	1875	1560



**Floor Fan Coil**  
**Exposed**  
**Slant**

Section	Models	FE-200S	FE-300S	FE-400S	FE-600S	FE-800S	FE-1000S	FE-1200S
Cooling Capacity (BTU/hr)		5549	12968	18998	28335	35973	45091	54301
Flow Rate Cooling (GPM)		1.1	2.58	3.8	5.6	7.15	9	11
Cooling Pressure Drop (Ft Water)		0.51	2.98	6.92	16.5	13.75	23	35.5
Heating Capacity (BTU/hr)		16637	25388	34166	49715	64402	79487	94516
Flow Rate heating (GPM)		1.66	2.53	3.5	5	6.4	8	9.5
Heating Pressure Drop (Ft Water)		0.91	2.4	4.9	11.3	9.7	15.6	23
Type	Forward Curved - Shaft Drive							
Quantity		1	1	2	2	3	4	4
Air Flow (CFM)		200	300	400	600	800	1000	1200
Motor Power (HP)		1/30	1/25	1/25	1/20	1/30+1/25	1/25+1/25	1/15+1/15
Current Draw (A)		0.31	0.37	0.37	0.37	0.31+0.37	0.37+0.37	0.37+0.37
In & Out Pipe Size (inch)	3/4							
Tube Outer Dimension (inch)	3/8							
Fin Specification	12 FPI, 3 Rows							
Face Areas (ft <sup>2</sup> )		0.789	1.156	1.522	1.889	2.253	2.619	2.985
Drain Pipe Size (inch)	5/8							
Air Filter	Aluminum Filter - Washable							
Weight (kg)		27.0	31.0	35.5	42.0	50.0	56.5	63.5
Control Unit	3 Steps Control Unit							

**Capacity Condition:**

Sea Level

Heating: Inlet Water: 160°F

Outlet Water: 140°F

DB: 60°F

Cooling: Inlet Water: 45°F

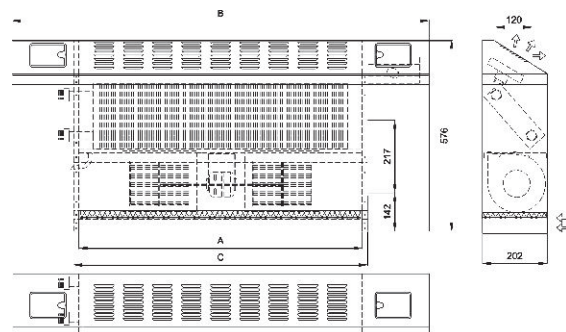
Outlet Water: 55°F

DB: 80°F

WB: 67°F

All motors are IP 20

MODELS	A	B	C
FE-200S	510	855	540
FE-300S	680	1025	710
FE-400S	850	1195	880
FE-600S	1020	1365	1050
FE-800S	1190	1535	1220
FE-1000S	1360	1705	1390
FE-1200S	1530	1875	1560



## Floor Fan Coil Concealed

Section	Models	FC-200	FC-300	FC-400	FC-600	FC-800	FC-1000	FC-1200
Cooling Capacity (BTU/hr)		5549	12968	18998	28335	35973	45091	54301
Flow Rate Cooling (GPM)		1.1	2.58	3.8	5.6	7.15	9	11
Cooling Pressure Drop (Ft Water)		0.51	2.98	6.92	16.5	13.75	23	35.5
Heating Capacity (BTU/hr)		16637	25388	34166	49715	64402	79487	94516
Flow Rate heating (GPM)		1.66	2.53	3.5	5	6.4	8	9.5
Heating Pressure Drop (Ft Water)		0.91	2.4	4.9	11.3	9.7	15.6	23
Type	Forward Curved - Shaft Drive							
Quantity		1	1	2	2	3	4	4
Air Flow (CFM)		200	300	400	600	800	1000	1200
Motor Power (HP)		1/30	1/25	1/25	1/20	1/30+1/25	1/25+1/25	1/15+1/15
Current Draw (A)		0.31	0.37	0.37	0.37	0.31+0.37	0.37+0.37	0.37+0.37
In & Out Pipe Size (inch)	3/4							
Tube Outer Dimension (inch)	3/8							
Fin Specification	12 FPI, 3 Rows							
Face Areas (ft <sup>2</sup> )		0.789	1.156	1.522	1.889	2.253	2.619	2.985
Drain Pipe Size (inch)	5/8							
Air Filter	Aluminum Filter - Washable							
Weight (kg)		16.5	19.6	22.9	26.3	29.8	33.9	38.5
Control Unit	3 Steps Control Unit							

### Capacity Condition:

Sea Level

Heating: Inlet Water: 160°F

Outlet Water: 140°F

DB: 60°F

Cooling: Inlet Water: 45°F

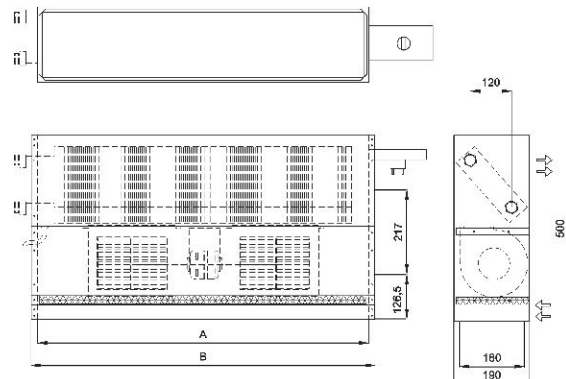
Outlet Water: 55°F

DB: 80°F

WB: 67°F

All motors are IP 20

MODELS	A	B
FC-200	510	540
FC-300	680	710
FC-400	850	880
FC-600	1020	1050
FC-800	1190	1220
FC-1000	1360	1390
FC-1200	1530	1560



## Ceiling Fan Coil Exposed

Models		CE-200	CE-300	CE-400	CE-600	CE-800	CE-1000	CE-1200
Section	Cooling Capacity (BTU/hr)	5549	12968	18998	28335	35973	45091	54301
	Flow Rate Cooling (GPM)	1.1	2.58	3.8	5.6	7.15	9	11
	Cooling Pressure Drop (Ft Water)	0.51	2.98	6.92	16.5	13.75	23	35.5
	Heating Capacity (BTU/hr)	16637	25388	34166	49715	64402	79487	94516
	Flow Rate heating (GPM)	1.66	2.53	3.5	5	6.4	8	9.5
	Heating Pressure Drop (Ft Water)	0.91	2.4	4.9	11.3	9.7	15.6	23
Ventilator	Type	Forward Curved - Shaft Drive						
	Quantity	1	1	2	2	3	4	4
	Air Flow (CFM)	200	300	400	600	800	1000	1200
	Motor Power (HP)	1/30	1/25	1/25	1/20	1/30+1/25	1/25+1/25	1/15+1/15
	Current Draw (A)	0.31	0.37	0.37	0.37	0.31+0.37	0.37+0.37	0.37+0.37
	In & Out Pipe Size (inch)	3/4						
Coil	Tube Outer Dimension (inch)	3/8						
	Fin Specification	12 FPI, 3 Rows						
	Face Areas (ft <sup>2</sup> )	0.789	1.156	1.522	1.889	2.253	2.619	2.985
	Drain Pipe Size (inch)	5/8						
	Air Filter	Aluminum Filter - Washable						
	Weight (kg)	27.5	31.1	36	42.5	50.3	57.3	64.5
	Control Unit	3 Steps Control Unit						

### Capacity Condition:

Sea Level

Heating: Inlet Water: 160°F

Outlet Water: 140°F

DB: 60°F

Cooling: Inlet Water: 45°F

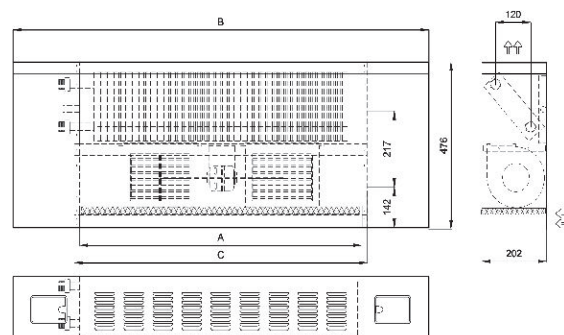
Outlet Water: 55°F

DB: 80°F

WB: 67°F

All motors are IP 20

MODELS	A	B	C
CE-200	510	855	540
CE-300	680	1025	710
CE-400	850	1195	880
CE-600	1020	1365	1050
CE-800	1190	1535	1220
CE-1000	1360	1705	1390
CE-1200	1530	1875	1560



**Concealed  
Ceiling Fan Coil  
Suction From Under**

Models		CC-200U	CC-300U	CC-400U	CC-600U	CC-800U	CC-1000U	CC-1200U
Section	Cooling Capacity (BTU/hr)	5549	12968	18998	28335	35973	45091	54301
	Flow Rate Cooling (GPM)	1.1	2.58	3.8	5.6	7.15	9	11
	Cooling Pressure Drop (Ft Water)	0.51	2.98	6.92	16.5	13.75	23	35.5
	Heating Capacity (BTU/hr)	16637	25388	34166	49715	64402	79487	94516
	Flow Rate heating (GPM)	1.66	2.53	3.5	5	6.4	8	9.5
	Heating Pressure Drop (Ft Water)	0.91	2.4	4.9	11.3	9.7	15.6	23
Ventilator	Type	Forward Curved - Shaft Drive						
	Quantity	1	1	2	2	3	4	4
	Air Flow (CFM)	200	300	400	600	800	1000	1200
	Motor Power (HP)	1/30	1/25	1/25	1/20	1/30+1/25	1/25+1/25	1/15+1/15
	Current Draw (A)	0.31	0.37	0.37	0.37	0.31+0.37	0.37+0.37	0.37+0.37
	In & Out Pipe Size (inch)	3/4						
Coil	Tube Outer Dimension (inch)	3/8						
	Fin Specification	12 FPI, 3 Rows						
	Face Areas (ft <sup>2</sup> )	0.789	1.156	1.522	1.889	2.253	2.619	2.985
	Drain Pipe Size (inch)	5/8						
Air Filter	Aluminum Filter - Washable							
Weight (kg)	19.8	23.4	27.6	33.0	40.4	47.7	50.5	
Control Unit	3 Steps Control Unit							

**Capacity Condition:**

Sea Level

Heating: Inlet Water: 160°F

Outlet Water: 140°F

DB: 60°F

Cooling: Inlet Water: 45°F

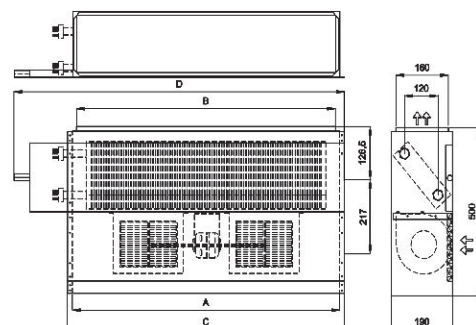
Outlet Water: 55°F

DB: 80°F

WB: 67°F

All motors are IP 20

MODELS	A	B	C	D
CC-200U	510	480	540	695
CC-300U	680	650	710	865
CC-400U	850	820	880	1035
CC-600U	1020	990	1050	1205
CC-800U	1190	1160	1220	1375
CC-1000U	1360	1330	1390	1545
CC-1200U	1530	1500	1560	1715



**Concealed  
Ceiling Fan Coil  
Suction From Back**

Models		CC-200B	CC-300B	CC-400B	CC-600B	CC-800B	CC-1000B	CC-1200B
Section	Cooling Capacity (BTU/hr)	5549	12968	18998	28335	35973	45091	54301
	Flow Rate Cooling (GPM)	1.1	2.58	3.8	5.6	7.15	9	11
	Cooling Pressure Drop (Ft Water)	0.51	2.98	6.92	16.5	13.75	23	35.5
	Heating Capacity (BTU/hr)	16637	25388	34166	49715	64402	79487	94516
	Flow Rate heating (GPM)	1.66	2.53	3.5	5	6.4	8	9.5
	Heating Pressure Drop (Ft Water)	0.91	2.4	4.9	11.3	9.7	15.6	23
Ventilator	Type	Forward Curved - Shaft Drive						
	Quantity	1	1	2	2	3	4	4
	Air Flow (CFM)	200	300	400	600	800	1000	1200
	Motor Power (HP)	1/30	1/25	1/25	1/20	1/30+1/25	1/25+1/25	1/15+1/15
	Current Draw (A)	0.31	0.37	0.37	0.37	0.31+0.37	0.37+0.37	0.37+0.37
	In & Out Pipe Size (inch)	3/4						
Coil	Tube Outer Dimension (inch)	3/8						
	Fin Specification	12 FPI, 3 Rows						
	Face Areas (ft <sup>2</sup> )	0.789	1.156	1.522	1.889	2.253	2.619	2.985
	Drain Pipe Size (inch)	5/8						
Air Filter	Aluminum Filter - Washable							
Weight (kg)	19.8	23.4	27.6	33	40.4	47.7	50.5	
Control Unit	3 Steps Control Unit							

**Capacity Condition:**

Sea Level

Heating: Inlet Water: 160°F

Outlet Water: 140°F

DB: 60°F

Cooling: Inlet Water: 45°F

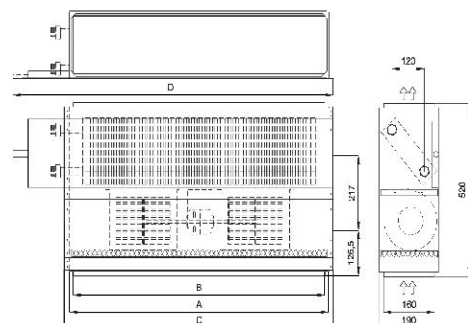
Outlet Water: 55°F

DB: 80°F

WB: 67°F

All motors are IP 20

MODELS	A	B	C	D
CC-200B	510	855	540	695
CC-300B	680	1025	710	865
CC-400B	850	1195	880	1035
CC-600B	1020	1365	1050	1205
CC-800B	1190	1535	1220	1375
CC-1000B	1360	1705	1390	1554
CC-1200B	1530	1875	1560	1715



**Concealed  
Ceiling Fan Coil  
Suction From Under**

Models		CC-200U	CC-300U	CC-400U	CC-600U	CC-800U	CC-1000U	CC-1200U
Section	Cooling Capacity (BTU/hr)	5549	12968	18998	28335	35973	45091	54301
	Flow Rate Cooling (GPM)	1.1	2.58	3.8	5.6	7.15	9	11
	Cooling Pressure Drop (Ft Water)	0.51	2.98	6.92	16.5	13.75	23	35.5
	Heating Capacity (BTU/hr)	16637	25388	34166	49715	64402	79487	94516
	Flow Rate heating (GPM)	1.66	2.53	3.5	5	6.4	8	9.5
	Heating Pressure Drop (Ft Water)	0.91	2.4	4.9	11.3	9.7	15.6	23
Ventilator	Type	EBM - Forward Curved - Direct Drive						
	Quantity	1	1	2	2	3	4	4
	Air Flow (CFM)	200	300	400	600	800	1000	1200
	Motor Power (HP)	1/30	1/25	1/25	1/20	1/30+1/15	1/25+1/25	1/15+1/15
	Current Draw (A)	0.31	0.37	0.37	0.37	0.31+0.37	0.37+0.37	0.37+0.37
	In & Out Pipe Size (inch)	3/4						
Coil	Tube Outer Dimension (inch)	3/8						
	Fin Specification	12 FPI, 3 Rows						
	Face Areas (ft <sup>2</sup> )	0.789	1.156	1.522	1.889	2.253	2.619	2.985
	Drain Pipe Size (inch)	5/8						
Air Filter	Aluminum Filter - Washable							
Weight (kg)	24.0	28.0	31.5	36.0	43.5	52.0	56.0	
Control Unit	3 Steps Control Unit							

**Capacity Condition:**

Sea Level

Heating: Inlet Water: 160°F

Outlet Water: 140°F

DB: 60°F

Cooling: Inlet Water: 45°F

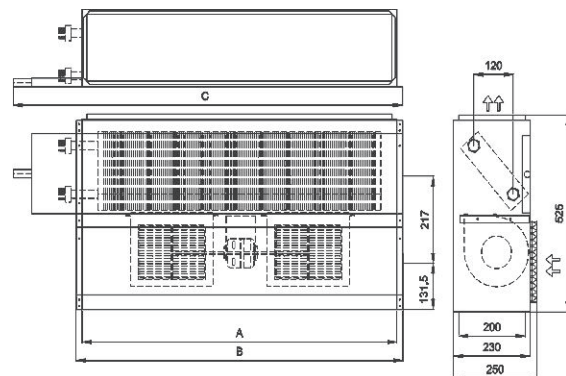
Outlet Water: 55°F

DB: 80°F

WB: 67°F

All motors are IP 20

MODELS	A	B	C
CC-200U	510	540	695
CC-300U	680	710	865
CC-400U	850	880	1035
CC-600U	1020	1050	1205
CC-800U	1190	1220	1375
CC-1000U	1360	1390	1554
CC-1200U	1530	1560	1715



**Concealed  
Ceiling Fan Coil  
Suction From Back**

Models		CC-200B	CC-300B	CC-400B	CC-600B	CC-800B	CC-1000B	CC-1200B
Section	Cooling Capacity (BTU/hr)	5549	12968	18998	28335	35973	45091	54301
	Flow Rate Cooling (GPM)	1.1	2.58	3.8	5.6	7.15	9	11
	Cooling Pressure Drop (Ft Water)	0.51	2.98	6.92	16.5	13.75	23	35.5
	Heating Capacity (BTU/hr)	16637	25388	34166	49715	64402	79487	94516
	Flow Rate heating (GPM)	1.66	2.53	3.5	5	6.4	8	9.5
	Heating Pressure Drop (Ft Water)	0.91	2.4	4.9	11.3	9.7	15.6	23
Ventilator	Type	EBM - Forward Curved - Direct Drive						
	Quantity	1	1	2	2	3	4	4
	Air Flow (CFM)	200	300	400	600	800	1000	1200
	Motor Power (HP)	1/14	1/14	2/21	2/21	1/14+2/21	2/21+2/21	2/21+2/21
	Current Draw (A)	0.24	0.24	0.31	0.31	0.24+0.31	0.31+0.31	0.31+0.31
	In & Out Pipe Size (inch)	3/4						
Coil	Tube Outer Dimension (inch)	3/8						
	Fin Specification	12 FPI, 3 Rows						
	Face Areas (ft <sup>2</sup> )	0.789	1.156	1.522	1.889	2.253	2.619	2.985
	Drain Pipe Size (inch)	5/8						
Air Filter	Aluminum Filter - Washable							
Weight (kg)	24.0	28.0	31.5	36.0	43.5	52.0	56.0	
Control Unit	3 Steps Control Unit							

**Capacity Condition:**

Sea Level

Heating: Inlet Water: 160°F

Outlet Water: 140°F

DB: 60°F

Cooling: Inlet Water: 45°F

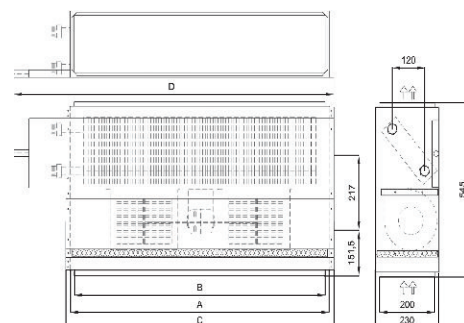
Outlet Water: 55°F

DB: 80°F

WB: 67°F

All motors are IP 20

MODELS	A	B	C	D
CC-200B	510	480	540	695
CC-300B	680	650	710	865
CC-400B	850	820	880	1035
CC-600B	1020	990	1050	1205
CC-800B	1190	1160	1220	1375
CC-1000B	1360	1330	1390	1554
CC-1200B	1530	1500	1560	1715



**Concealed  
Ceiling Fan Coil  
Mini Cabinet**

Models		CC-200M	CC-300M	CC-400M	CC-600M	CC-800M	CC-1000M	CC-1200M
Section	Cooling Capacity (BTU/hr)	5549	12968	18998	28335	35973	45091	54301
	Flow Rate Cooling (GPM)	1.1	2.58	3.8	5.6	7.15	9	11
	Cooling Pressure Drop (Ft Water)	0.51	2.98	6.92	16.5	13.75	23	35.5
	Heating Capacity (BTU/hr)	16637	25388	34166	49715	64402	79487	94516
	Flow Rate heating (GPM)	1.66	2.53	3.5	5	6.4	8	9.5
	Heating Pressure Drop (Ft Water)	0.91	2.4	4.9	11.3	9.7	15.6	23
Ventilator	Type	Forward Curved - Shaft Drive						
	Quantity	1	1	2	2	3	4	4
	Air Flow (CFM)	200	300	400	600	800	1000	1200
	Motor Power (HP)	1/30	1/25	1/25	1/20	1/30+1/25	1/25+1/25	1/15+1/15
	Current Draw (A)	0.31	0.37	0.37	0.37	0.31+0.37	0.37+0.37	0.37+0.37
	In & Out Pipe Size (inch)	3/4						
Coil	Tube Outer Dimension (inch)	3/8						
	Fin Specification	12 FPI, 3 Rows						
	Face Areas (ft <sup>2</sup> )	0.789	1.156	1.522	1.889	2.253	2.619	2.985
	Drain Pipe Size (inch)	5/8						
Air Filter	Aluminum Filter - Washable							
Weight (kg)	16.5	19.6	22.9	26.3	29.8	33.9	38.5	
Control Unit	3 Steps Control Unit							

**Capacity Condition:**

Sea Level

Heating: Inlet Water: 160°F

Outlet Water: 140°F

DB: 60°F

Cooling: Inlet Water: 45°F

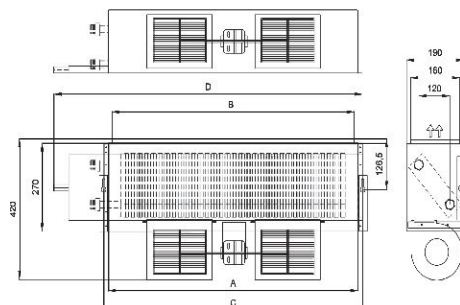
Outlet Water: 55°F

DB: 80°F

WB: 67°F

All motors are IP 20

MODELS	A	B	C	D
CC-200M	510	480	540	695
CC-300M	680	650	710	865
CC-400M	850	820	880	1035
CC-600M	1020	990	1050	1205
CC-800M	1190	1160	1220	1375
CC-1000M	1360	1330	1390	1545
CC-1200M	1530	1500	1560	1715



**Decorative  
Floor Fan Coil**

Models		CD-200	CD-300	CD-400	CD-600	CD-800
Section	Cooling Capacity (BTU/hr)	5549	12968	18998	28335	35973
	Flow Rate Cooling (GPM)	1.1	2.58	3.8	5.6	7.15
	Cooling Pressure Drop (Ft Water)	0.51	2.98	6.92	16.5	13.75
	Heating Capacity (BTU/hr)	16637	25388	34166	49715	64402
	Flow Rate heating (GPM)	1.66	2.53	3.5	5	6.4
	Heating Pressure Drop (Ft Water)	0.91	2.4	4.9	11.3	9.7
Ventilator	Type	Forward Curved - Direct Drive				
	Quantity	1	1	2	2	3
	Air Flow (CFM)	200	300	400	600	800
	Motor Power (HP)	1/30	1/25	1/25	1/15	1/30+1/25
	Current Draw (A)	0.31	0.37	0.37	0.37	0.31+0.37
	In & Out Pipe Size (inch)	3/4				
Coil	Tube Outer Dimension (inch)	3/8				
	Fin Specification	12 FPI, 3 Rows				
	Face Areas ( ft <sup>2</sup> )	0.789	1.156	1.522	1.889	2.253
	Drain Pipe Size (inch)	5/8				
	Air Filter	Vinyl Chloride (Flush Type)				
	Weight (kg)	22	26	30	33	37
	Control Unit	3 Steps Control Unit or Intelligent Speed Adjuster				

**Capacity Condition:**

Sea Level

Heating: Inlet Water: 160°F

Outlet Water: 140°F

DB: 60°F

Cooling: Inlet Water: 45°F

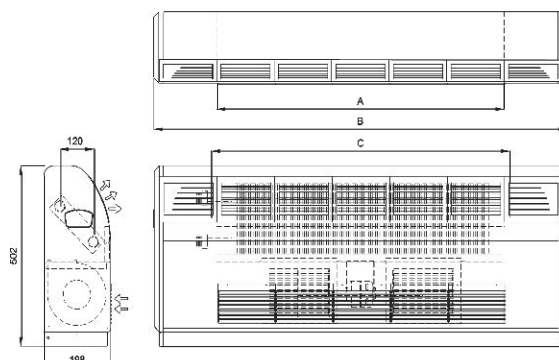
Outlet Water: 55°F

DB: 80°F

WB: 67°F

All motors are IP 20

MODELS	A	B	C
CD-200	510	886	540
CD-300	680	1056	710
CD-400	850	1226	880
CD-600	1020	1396	1050
CD-800	1190	1566	1220



**Decorative Ceiling Fan Coil**

Section	Models	FD-200	FD-300	FD-400	FD-600	FD-800
Cooling Capacity (BTU/hr)	5549	12968	18998	28335	35973	
	Flow Rate Cooling (GPM)	1.1	2.58	3.8	5.6	7.15
	Cooling Pressure Drop (Ft Water)	0.51	2.98	6.92	16.5	13.75
	Heating Capacity (BTU/hr)	16637	25388	34166	49715	64402
	Flow Rate heating (GPM)	1.66	2.53	3.5	5	6.4
	Heating Pressure Drop (Ft Water)	0.91	2.4	4.9	11.3	9.7
Ventilator	Type	Forward Curved - Direct Drive				
	Quantity	1	1	2	2	3
	Air Flow (CFM)	200	300	400	600	800
	Motor Power (HP)	1/30	1/25	1/25	1/15	1/30+1/25
	Current Draw (A)	0.31	0.37	0.37	0.37	0.31+0.37
	In & Out Pipe Size (inch)	3/4				
Coil	Tube Outer Dimension (inch)	3/8				
	Fin Specification	12 FPI, 3 Rows				
	Face Areas ( ft <sup>2</sup> )	0.789	1.156	1.522	1.889	2.253
	Drain Pipe Size (inch)	5/8				
Air Filter	Vinyl Chloride (Flush Type)					
Weight (kg)	19.1	23.2	28.0	31.5	35.5	
Control Unit	3 Steps Control Unit or Intelligent Speed Adjuster					

**Capacity Condition:**

Sea Level

Heating: Inlet Water: 160°F

Outlet Water: 140°F

DB: 60°F

Cooling: Inlet Water: 45°F

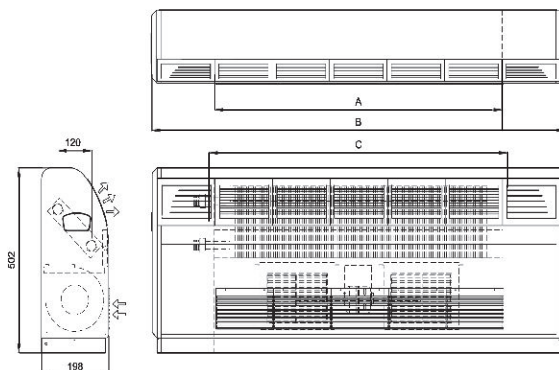
Outlet Water: 55°F

DB: 80°F

WB: 67°F

All motors are IP 20

MODELS	A	B	C
FD-200	510	886	540
FD-300	680	1056	710
FD-400	850	1226	880
FD-600	1020	1396	1050
FD-800	1190	1566	1220



## Ducted Fan Coil Suction From Under

Models		DF- 8U	DF-10U	DF-12U	DF-14U	DF-16U	DF-18U	DF-20U
Section	Cooling Capacity (BTU/hr)	26225	31810	42976	53241	64523	75798	87548
	Flow Rate Cooling (GPM)	5.3	6.3	8.5	10.6	12.8	15	17.4
	Cooling Pressure Drop (Ft Water)	0.815	0.65	1.134	1.72	2.53	3.5	4.8
	Heating Capacity (BTU/hr)	80695	109737	129537	149231	169699	190146	210412
	Flow Rate heating (GPM)	8	11	13	15	17	19	21
	Heating Pressure Drop (Ft Water)	1.62	1.4	1.975	2.7	3.5	4.5	5.5
Ventilator	Type	EBM - Forward Curved - Direct Drive						
	Quantity	1	1	1	1	1	1	1
	Air Flow (CFM)	800	1000	1200	1400	1600	1800	2000
	Motor Power (HP)	1/3	1/3	2/3	2/3	1	1	1.50
	Current Draw (A)	1.07	1.07	1.72	1.72	2.98	2.98	5.31
	In & Out Pipe Size (inch)	1						
Coil	Tube Outer Dimension (inch)	3/8						
	Fin Specification	12 FPI, 4 Rows						
	Face Areas ( ft <sup>2</sup> )	1.64	3.28	3.499	3.717	4.045	4.375	4.713
	Drain Pipe Size (inch)	5/8						
	Air Filter	Aluminum Filter - Washable						
	Weight (kg)	58.0	62.5	68.8	70.1	75.0	78.0	82.0
	Control Unit	1 Step Control Unit or Intelligent Speed Adjuster (optional)						

### Capacity Condition:

Sea Level

Heating: Inlet Water: 160°F

Outlet Water: 140°F

DB: 60°F

Cooling: Inlet Water: 45°F

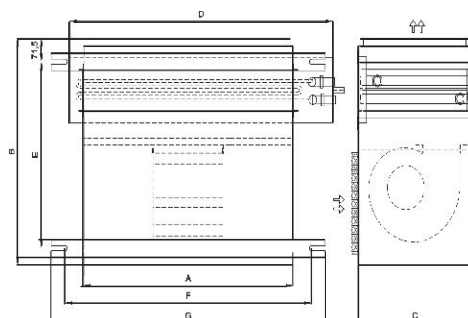
Outlet Water: 55°F

DB: 80°F

WB: 67°F

All motors are IP 20

MODELS	A	B	C	D	E	F	G
DF-8U	690	695	435	965	600	900	1000
DF-10U	765	725	435	965	600	900	1000
DF-12U	815	725	435	1015	600	955	1055
DF-14U	870	725	435	1070	600	1005	1105
DF-16U	945	725	435	1145	600	1080	1180
DF-18U	1020	725	435	1220	600	1155	1255
DF-20U	1100	795	455	1300	670	1235	1335



## Ducted Fan Coil Suction From Back

Models		DF- 8B	DF-10B	DF-12B	DF-14B	DF-16B	DF-18B	DF-20B
Section	Cooling Capacity (BTU/hr)	26225	31810	42976	53241	64523	75798	87548
	Flow Rate Cooling (GPM)	5.3	6.3	8.5	10.6	12.8	15	17.4
	Cooling Pressure Drop (Ft Water)	0.815	0.65	1.134	1.72	2.53	3.5	4.8
	Heating Capacity (BTU/hr)	80695	109737	129537	149231	169699	190146	210412
	Flow Rate heating (GPM)	8	11	13	15	17	19	21
	Heating Pressure Drop (Ft Water)	1.62	1.4	1.975	2.7	3.5	4.5	5.5
Ventilator	Type	EBM - Forward Curved - Direct Drive						
	Quantity	1	1	1	1	1	1	1
	Air Flow (CFM)	800	800	1200	1400	1600	1800	2000
	Motor Power (HP)	1/3	1/3	2/3	2/3	1	1	1.50
	Current Draw (A)	1.07	1.07	1.72	1.72	2.98	2.98	5.31
	In & Out Pipe Size (inch)	1						
Coil	Tube Outer Dimension (inch)	3/8						
	Fin Specification	12 FPI, 4 Rows						
	Face Areas ( ft <sup>2</sup> )	1.64	3.28	3.499	3.717	4.045	4.375	4.713
	Drain Pipe Size (inch)	5/8						
	Air Filter	Aluminum Filter - Washable						
	Weight (kg)	58.0	62.5	68.8	70.1	75.0	78.0	82.0
	Control Unit	1 Step Control Unit or Intelligent Speed Adjuster (optional)						

### Capacity Condition:

Sea Level

Heating: Inlet Water: 160°F

Outlet Water: 140°F

DB: 60°F

Cooling: Inlet Water: 45°F

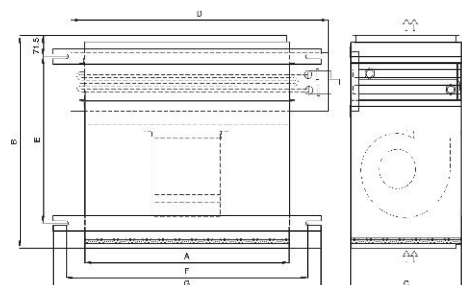
Outlet Water: 55°F

DB: 80°F

WB: 67°F

All motors are IP 20

MODELS	A	B	C	D	E	F	G
DF-8U	690	730	435	965	600	900	1000
DF-10U	765	760	435	965	600	900	1000
DF-12U	815	760	435	1015	600	955	1055
DF-14U	870	760	435	1070	600	1005	1105
DF-16U	945	760	435	1145	600	1080	1180
DF-18U	1020	760	435	1220	600	1155	1255
DF-20U	1100	830	455	1300	670	1235	1335



## Fan Coil Selection

In Order to correct selection of a Fan coil, it is necessary to know required airflow rate, heating and cooling capacity of space, and also Fan coil's installation position above sea level. Fan coil's capacities are different due to different heights. In order to identify the features of a Fan coil, functioning in a sea level condition, having maximum fan's round, you can use the table offered in the catalog.

This table is regulated on the basis of inlet airdry bulb at  $80^{\circ}\text{F}$  and inlet air wet bulb at  $67^{\circ}\text{F}$  and inlet water at  $160^{\circ}\text{F}$  for heating load. Any difference between project conditions from above mentioned condition, should be obtained by using related correction factor, from the table.

The correction factor of Fan coil's capacity in different heights above sea level is obtained at Table No.1.

Table No.1

The table of fan coils' capacities are regulated on the basis of wet bulb temperature at  $67^{\circ}\text{F}$  and inlet water at  $45^{\circ}\text{F}$  in the summer. If condition of calculation of Fan coil capacity varies from these conditions, then total cooling correction factor relative to the main table of in wet bulb condition and inlet water is obtained from the following table:

Table No.2

## Fan Coil Selection

Fan Coil Selection

Table 1

Altitude from Sea level (ft)	1000	2000	3000	4000	5000	6000	7000
Total Cooling Load (btu/hr)	0.99	0.98	0.97	0.96	0.94	0.93	0.92
Sensible Cooling Load (btu/hr)	0.96	0.93	0.90	0.86	0.83	0.80	0.77
Total Heating Load (btu/hr)	0.96	0.93	0.90	0.86	0.83	0.80	0.77

Fan Coil Selection

Table 2

Inlet Water(F)	42	43	44	45	46	47	48
Wet bulb(F)							
58	0.65	0.60	0.56	0.52	0.48	0.44	0.40
59	0.70	0.66	0.62	0.58	0.53	0.49	0.45
60	0.75	0.71	0.67	0.63	0.58	0.54	0.50
61	0.80	0.76	0.72	0.68	0.63	0.59	0.55
61	0.80	0.76	0.72	0.68	0.63	0.59	0.55
62	0.85	0.81	0.77	0.73	0.68	0.64	0.60
63	0.90	0.86	0.82	0.78	0.73	0.69	0.65
64	0.95	0.91	0.87	0.83	0.78	0.74	0.70
65	1.01	0.97	0.93	0.89	0.84	0.80	0.76
66	1.07	1.03	0.99	0.95	0.90	0.85	0.81
67	1.12	1.08	1.04	1.0	0.95	0.90	0.86
68	1.18	1.14	1.10	1.06	1.01	0.96	0.92